

# Wood chips for trains

by TheMrSeq

**WARNING:** Installing this mod will change the games basic data!  
Maybe you won't be able to play multiplayer, while you've got this Mod  
installed!

To uninstall please read 'HowToUninstall.pdf'.

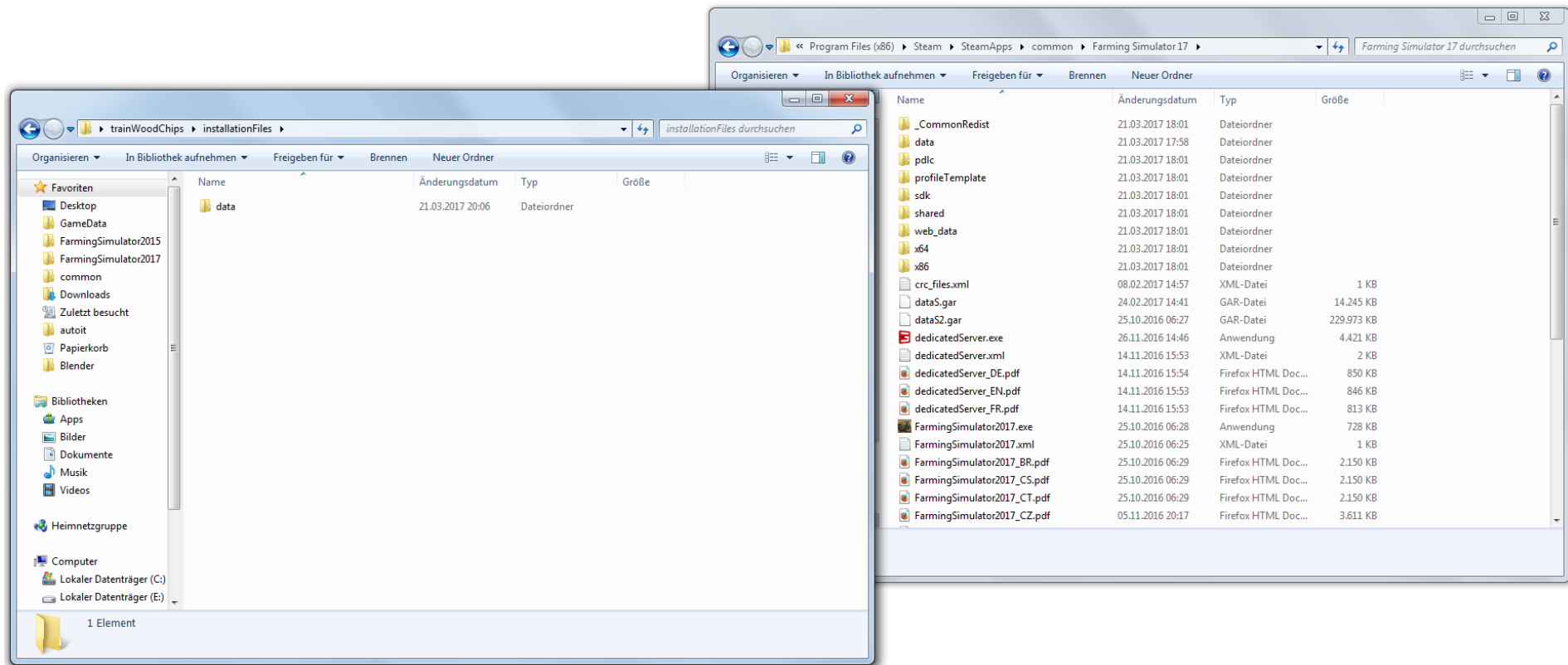
## **How to use**

1. Go to your installation folder.  
If you bought the game on steam it's mostly at  
C:\Program Files (x86)\Steam\SteamApps\common\Farming Simulator 17  
Otherwise you should search for the 'Farming Simulator 17' folder.
2. Copy the 'data' folder from inside 'installationFiles'(Mod) to your  
'Farmig Simulator 17' installation folder

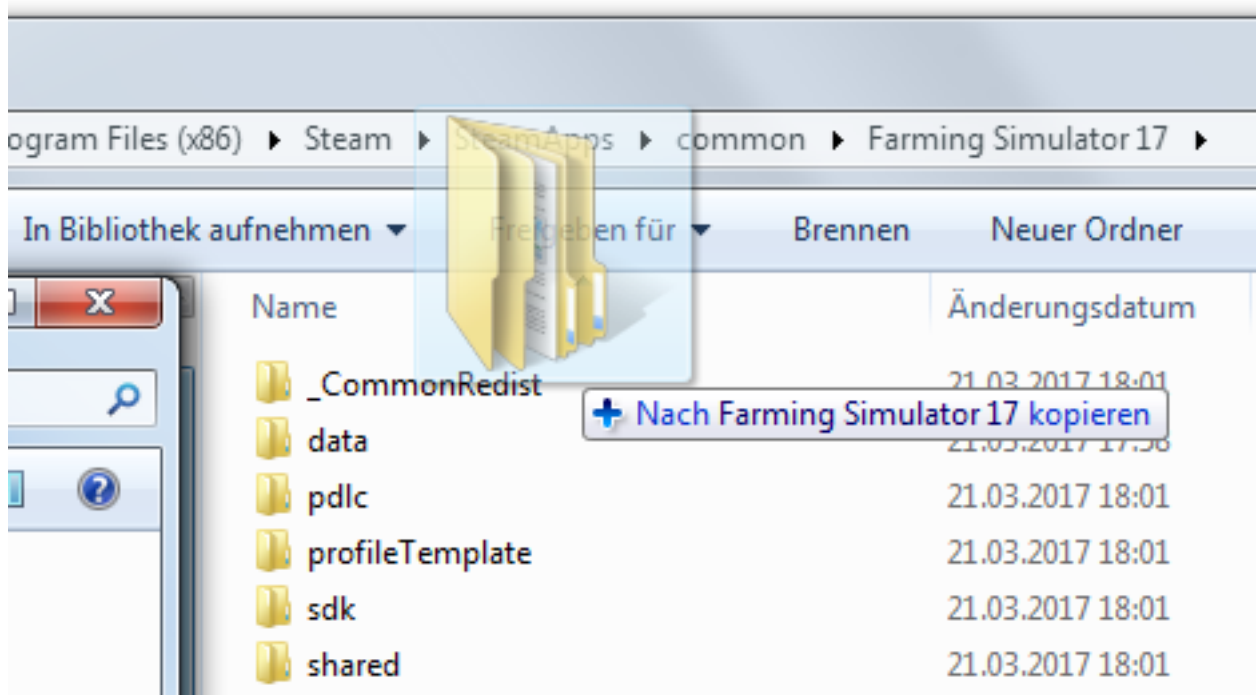
Sorry, but I got a german windows installation, so maybe the pictures aren't helpful.

Scroll down

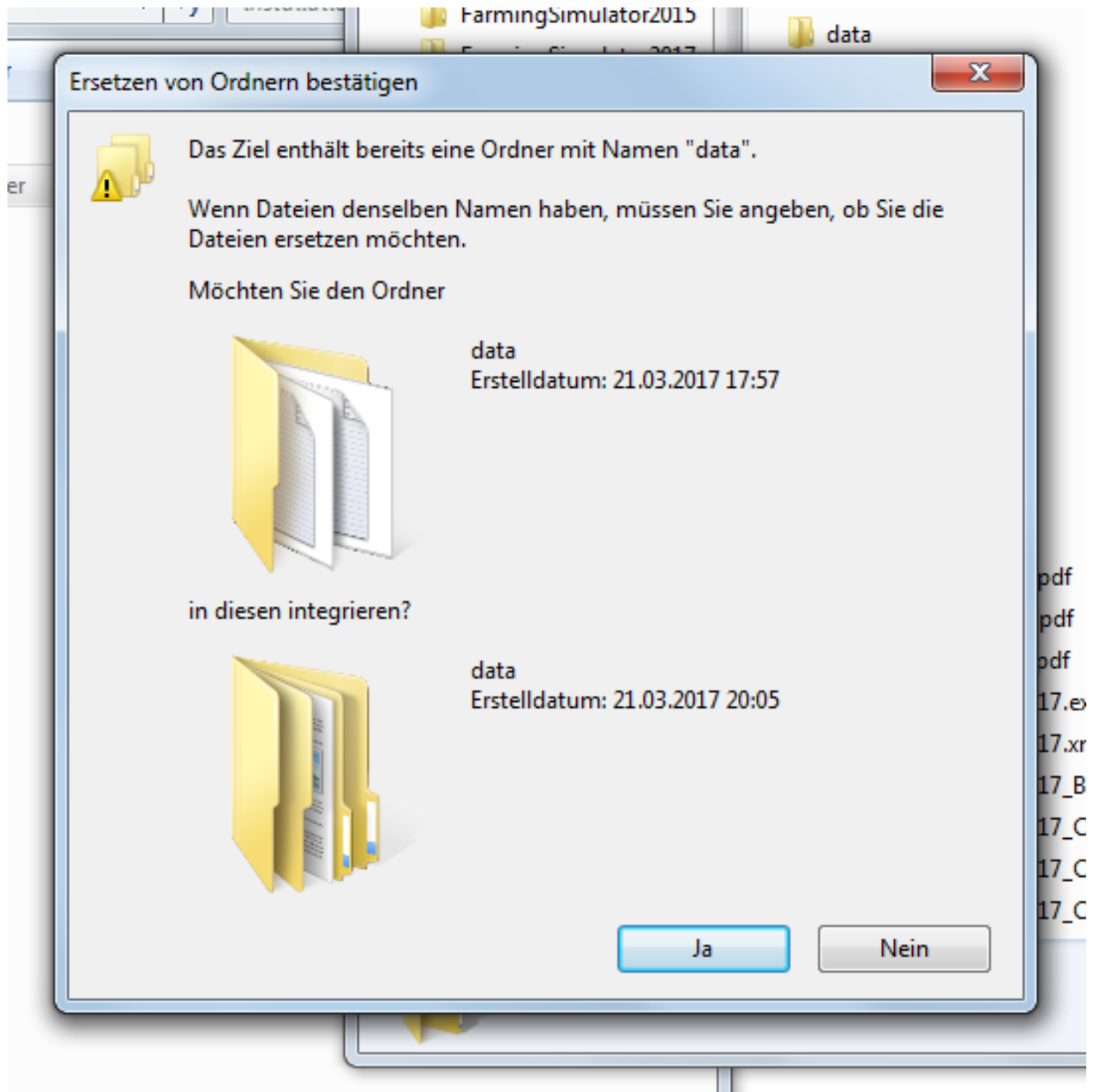




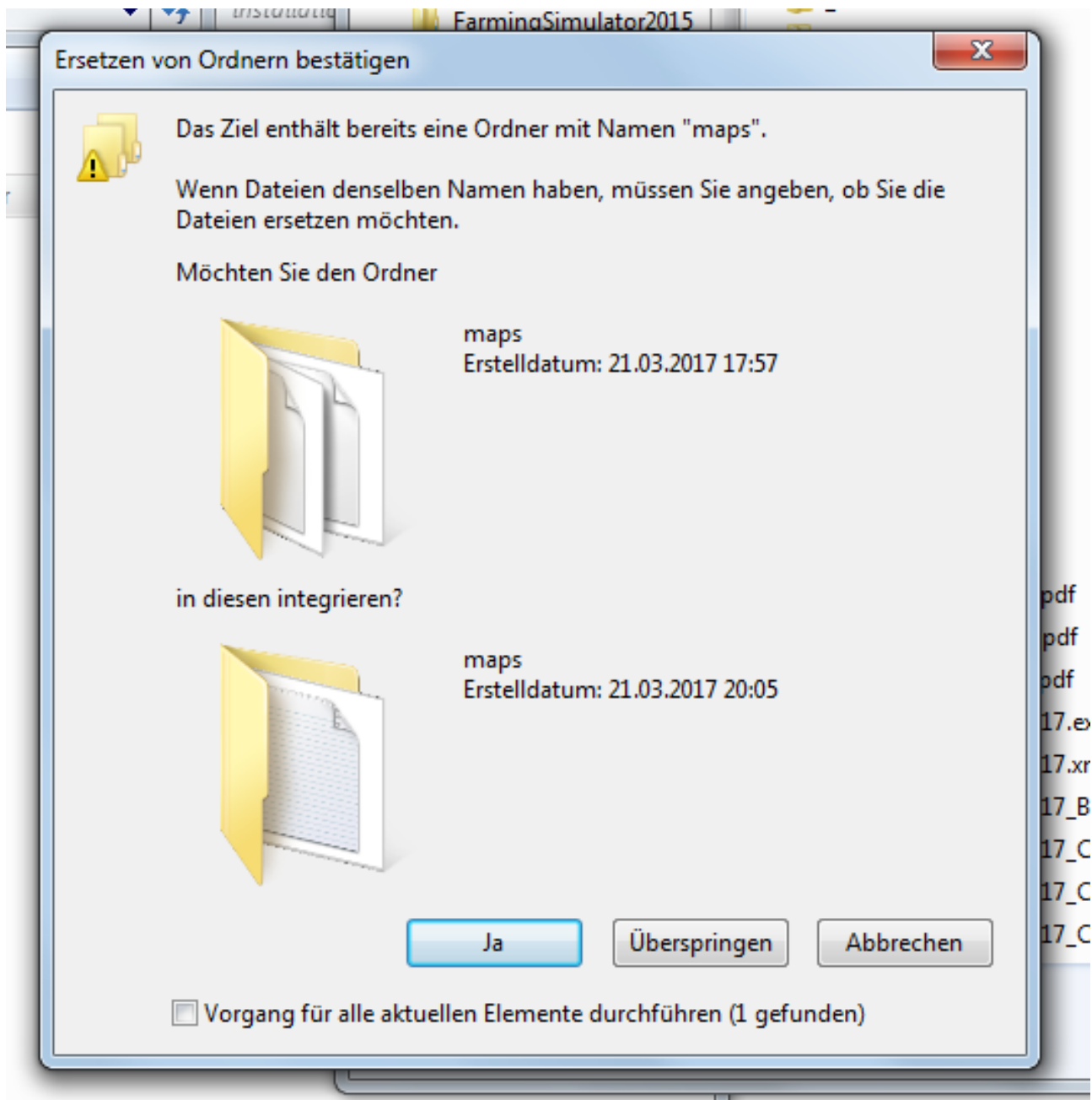
1. Picture: The mod folder on the left and the Farming Simulator installation folder on the right.



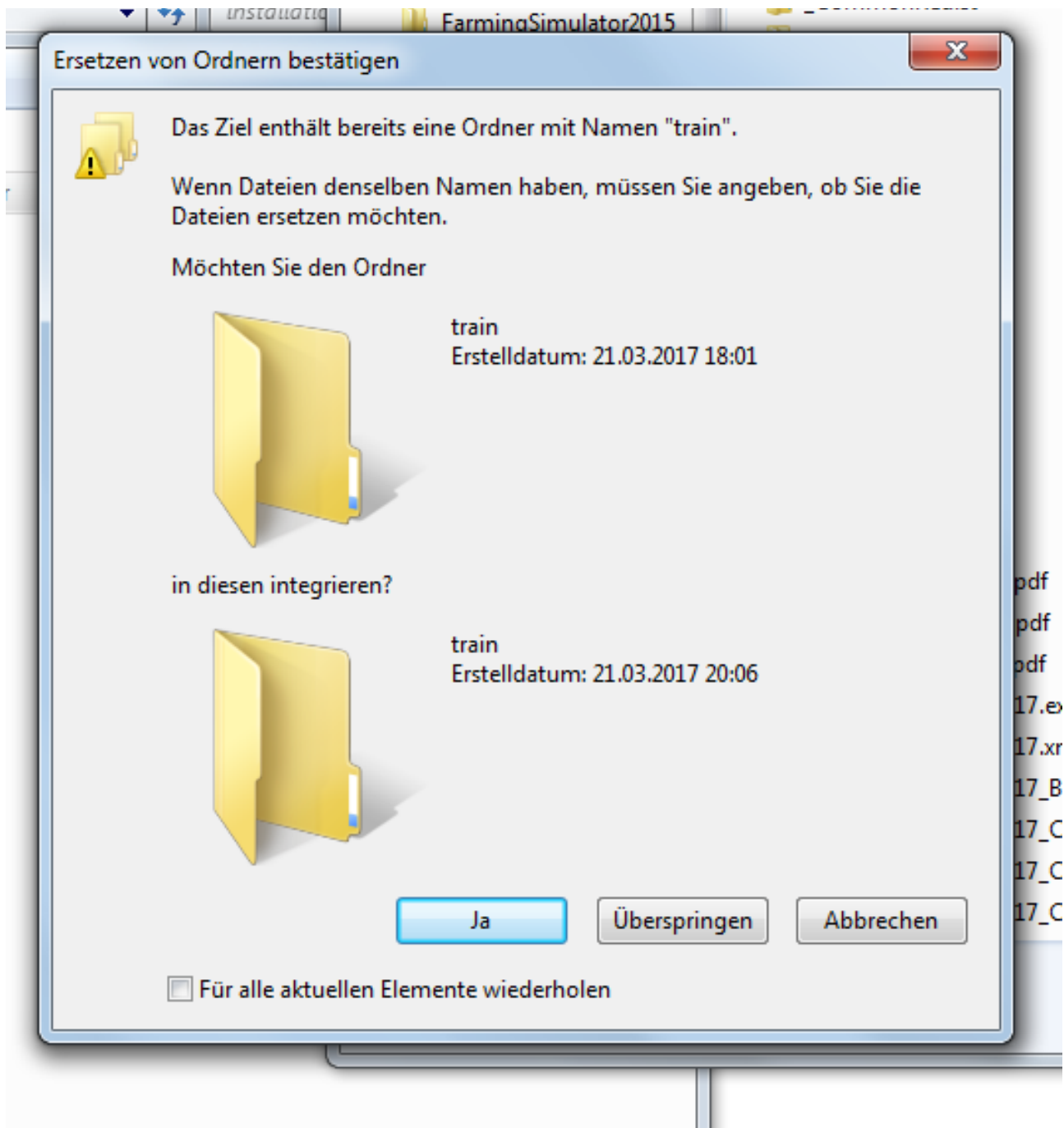
2. Picture: Copy the 'data' folder of the Mod into your 'Farming Simulator 17' installation folder.



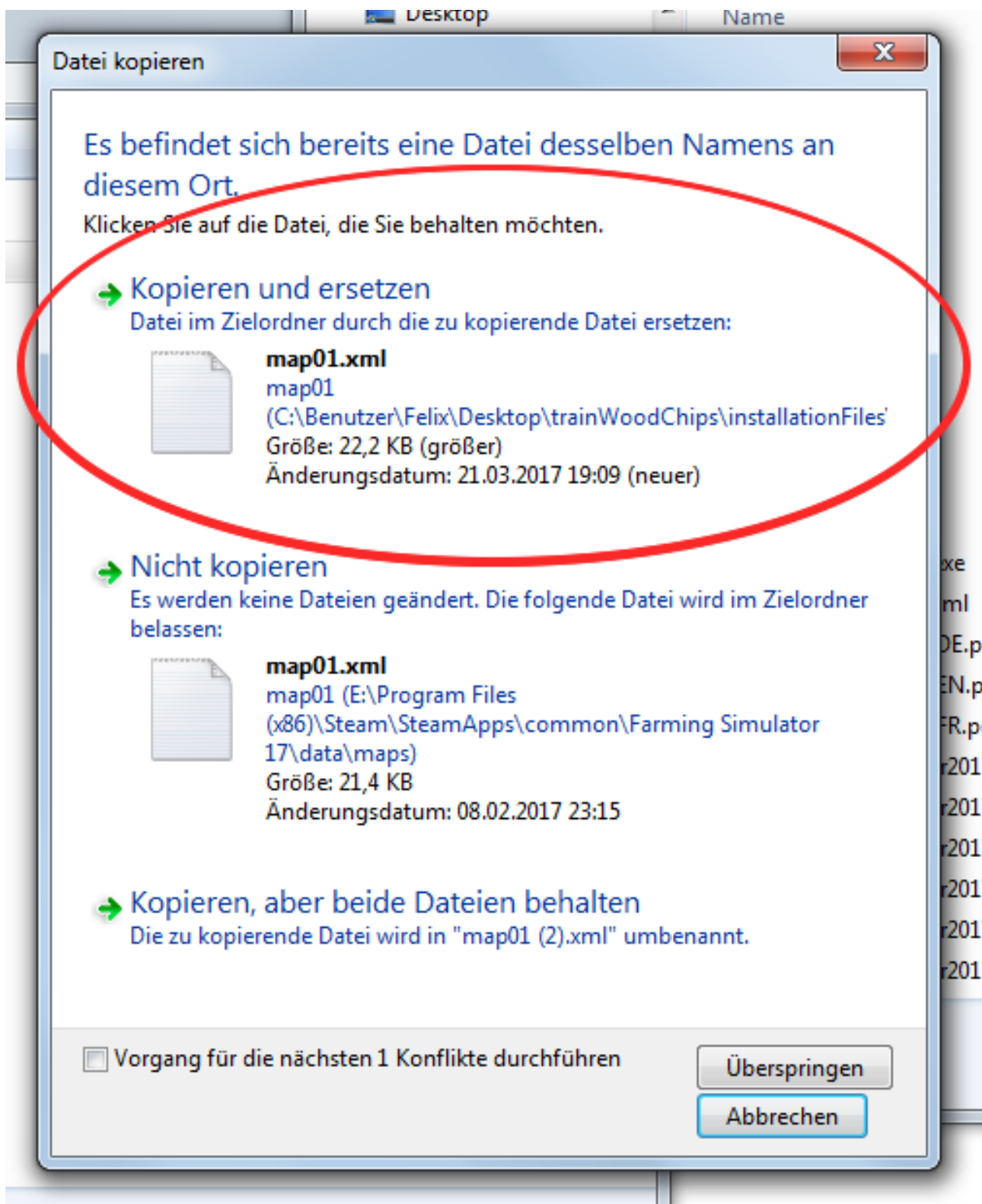
3. Picture: Confirm, that you want to integrate the folder 'data'.



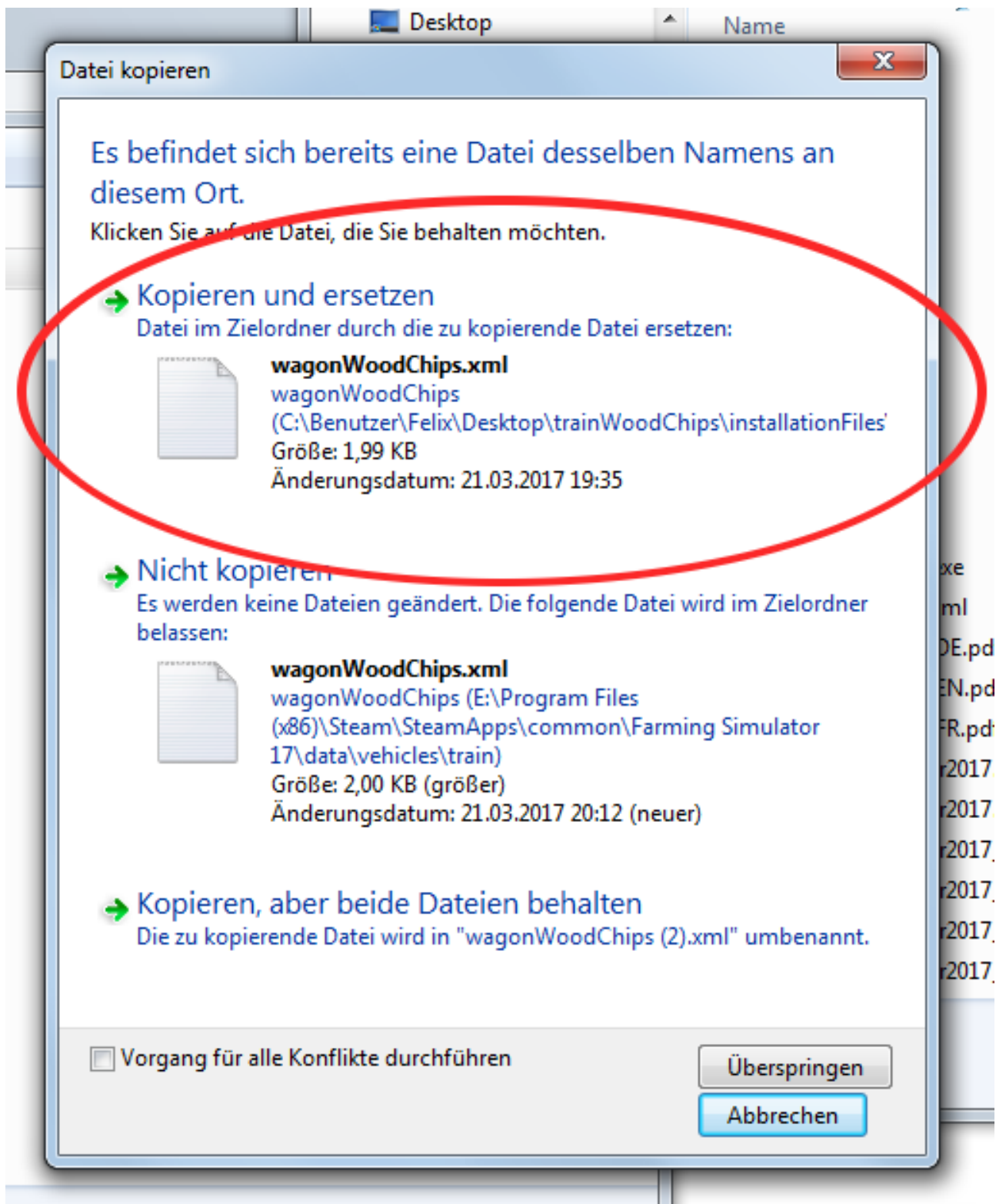
4. Picture: Confirm that you want to integrate the folder 'maps'.



5. Picture: Confirm that you want to integrate the folder 'train'.



6. Picture: Click 'Copy and replace'.



7. Picture: Click 'Copy and replace'.